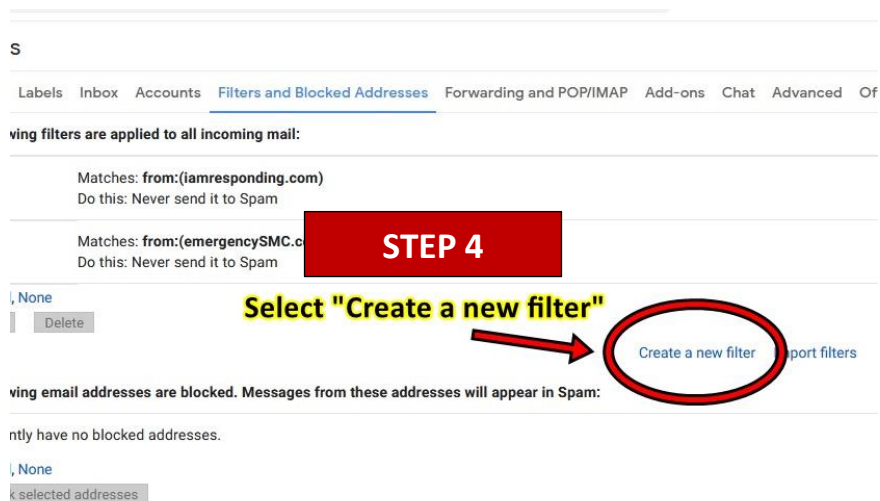
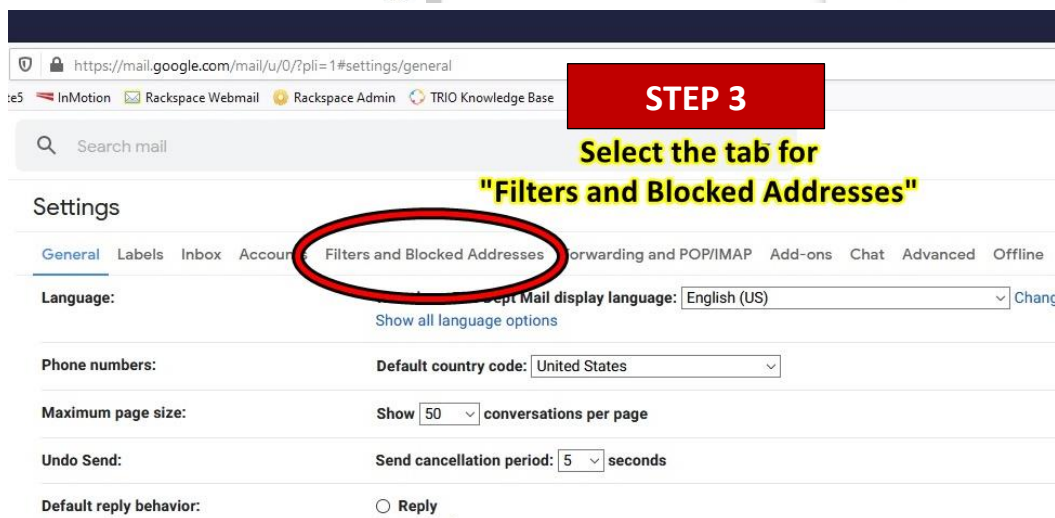
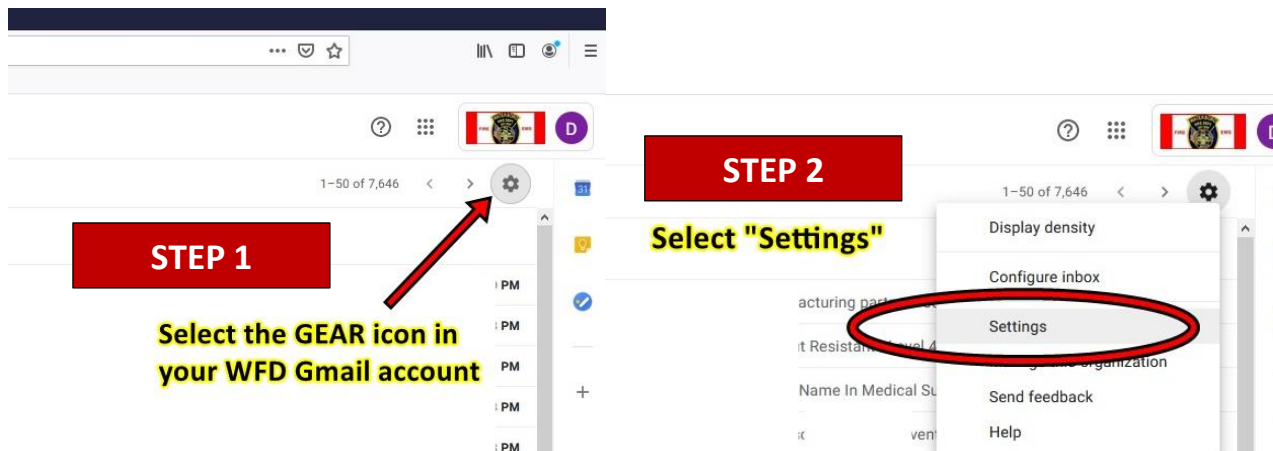


WFD Gmail Whitelisting Guide

Whitelist the "Waterboro-ME.Gov" Domain

Note: individual email addresses or complete domains can be whitelisted with the following instructions.



STEP 5
Type: **waterboro-me.gov** in the 'From' field

STEP 6
Then click "Create filter"

STEP 7
Check the box: "Never send it to Spam"

STEP 8
Then click "Create filter"

The following email addresses are blocked. Messages from these addresses will appear in Spam:

You currently have no blocked addresses.

Select: All, None
[Unblock selected addresses]

from:(waterboro-me.gov)

When a message arrives that matches the criteria, you can choose to:

- Skip the inbox (Archive it)
- Mark as read
- Star it
- Apply the label: Choose label...
- Forward it to: Choose an address... add forwarding address
- Delete it
- Never send it to Spam
- Always mark it as important
- Never mark it as important
- Categorize as: Choose category...
- Also apply filter to matching conversations.

Note: filter will not be applied to old conversations in Spam or Trash

Learn more

[Create filter]

Settings

General Labels Inbox Accounts Filters and Blocked Addresses Forwarding and POP/IMAP Add-ons Chat Advance

The following filters are applied to all incoming mail:

- Matches: from:(iamresponding.com)
Do this: Never send it to Spam
- Matches: from:(emergencySMC.com)
Do this: Never send it to Spam
- Matches: from:(waterboro-me.gov)
Do this: Never send it to Spam

Select: All, None
[Export] [Delete]

Create a new filter Import filter

DONE
You'll see the new entry here.
Process is completed.

The following email addresses are blocked. Messages from these addresses will appear in Spam:

You currently have no blocked addresses.

Select: All, None
[Unblock selected addresses]