

# Town of Waterboro, Maine Shoreland Zoning Map

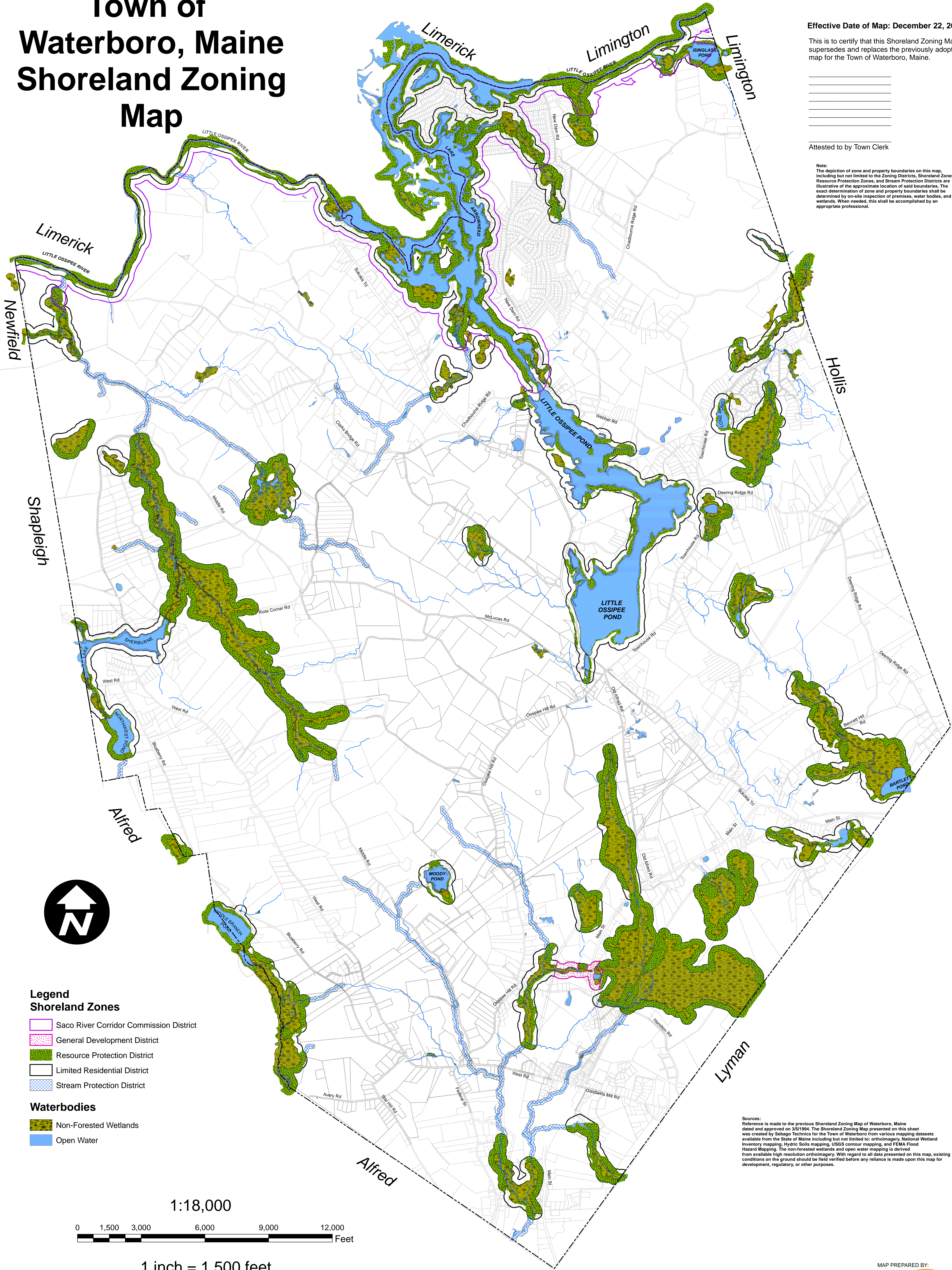
Effective Date of Map: December 22, 2016

This is to certify that this Shoreland Zoning Map supersedes and replaces the previously adopted map for the Town of Waterboro, Maine.

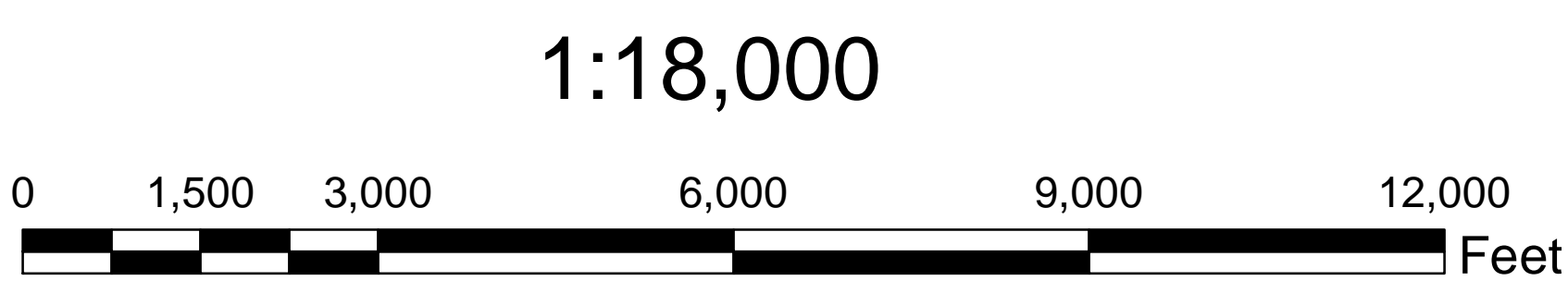
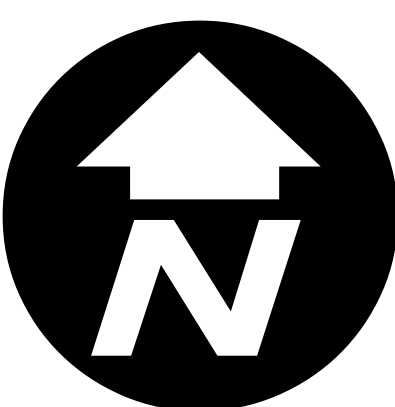
\_\_\_\_\_  
\_\_\_\_\_  
\_\_\_\_\_  
\_\_\_\_\_  
\_\_\_\_\_

Attested to by Town Clerk

Note:  
The depiction of zone and property boundaries on this map, including but not limited to the Zoning Districts, Shoreland Zones, Resource Protection Zones, and Stream Protection Districts are illustrative of the approximate location of said boundaries. The exact determination of zone and property boundaries shall be determined by on-site inspection of premises, water bodies, and wetlands. When needed, this shall be accomplished by an appropriate professional.



- Legend**  
**Shoreland Zones**
- Saco River Corridor Commission District
  - General Development District
  - Resource Protection District
  - Limited Residential District
  - Stream Protection District
- Waterbodies**
- Non-Forested Wetlands
  - Open Water



1 inch = 1,500 feet

Sources:  
Reference is made to the previous Shoreland Zoning Map of Waterboro, Maine dated and approved on 3/5/1984. The Shoreland Zoning Map presented on this sheet was created by Sebago Technics for the Town of Waterboro from various mapping datasets available from the State of Maine including but not limited to: orthoimagery, National Wetland Inventory mapping, Hydric Soils mapping, USGS contour mapping, and FEMA Flood Hazard Mapping. The non-forested wetlands and open water mapping is derived from available high resolution orthoimagery. With regard to all data presented on this map, existing conditions on the ground should be field verified before any reliance is made upon this map for development, regulatory, or other purposes.

MAP PREPARED BY:  
**SEBAGO**  
www.sebagotechnics.com  
19 John Roberts Rd., Suite 100  
Rocky Hill, ME 04876  
Tel: 207-583-5555